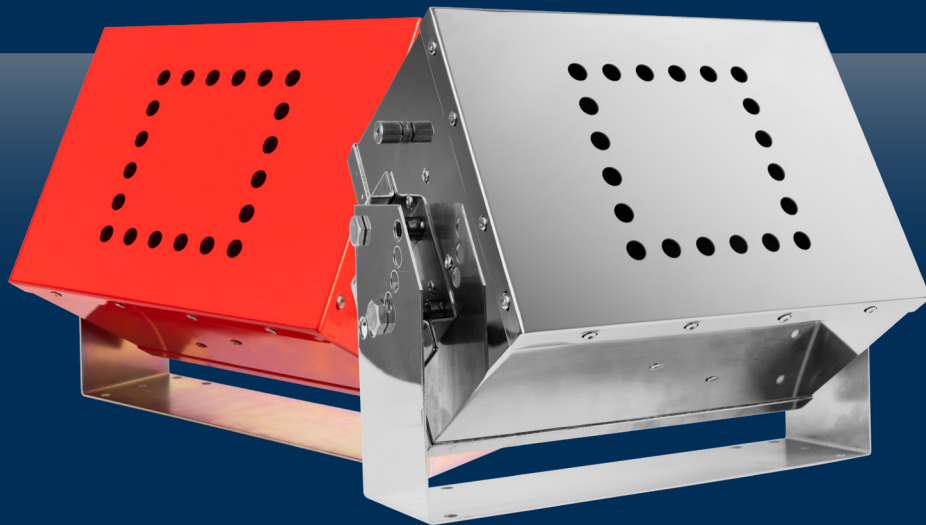


FP-1200



■ FP-1200

Product Code: 10147

Product Description:

- FirePro Fire Extinguishing Generator FP-1200

Features:

- LPCB, UL, KIWA, MED & BSI Certified
- Carbon steel, red-coated casing

■ FP-1200S

Product Code: 10395

Product Description:

- FirePro Fire Extinguishing Generator FP-1200S

Features:

- LPCB, UL, KIWA, MED & BSI Certified
- Stainless steel casing

■ FP-1200T

Product Code: 10316

Product Description:

- FirePro Fire Extinguishing Generator FP-1200T

Features:

- LPCB, UL, KIWA & BSI Certified
- This model can be activated thermally (optional)
- Carbon steel, red-coated casing

■ FP-1200TS

Product Code: 10622

Product Description:

- FirePro Fire Extinguishing Generator FP-1200TS

Features:

- LPCB, UL, KIWA & BSI Certified
- This model can be activated thermally (optional)
- Stainless steel casing

TECHNICAL INFORMATION

Model	FP-1200 / FP-1200S / FP-1200T / FP-1200TS
Activation method	<ul style="list-style-type: none"> • Electrical • Thermal (FP-1200T/ FP-1200TS)
Weight (gross)	10,900 g (excluding bracket)
Mass of FPC compound	1,200 g
Operational discharge time	10 - 15 seconds
Dimensions	216 mm x 300 mm x 167 mm
Fire class	EN 2: A, B, C, F - NFPA 10: A, B, C

Generators are provided complete with brackets