

About Us

Mint Energy develops energy generation and energy storage solutions to meet the ever-changing needs of modern-day consumers and businesses. Mint Energy strives to provide safe, environmentally-friendly, cost-effective, and reliable solutions.

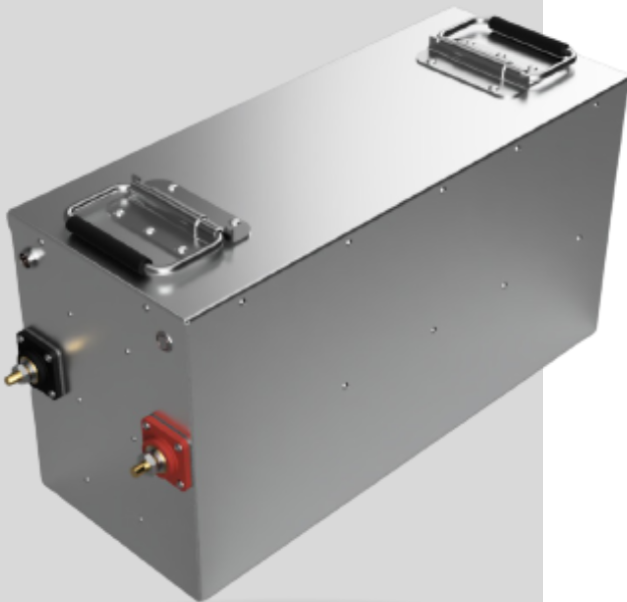


8.4 Golf Cart Battery

Known for its exceptional flexibility, electrical conductivity, and mechanical strength, Graphene allows for quick charging, increased capacity, improved performance, and extended battery life span. Graphene has an ultimate tensile strength of 130,000,000,000 Pascals. Unlike lithium-ion, lead acid, and other types of batteries, Graphene does not lose its ability to charge over time.

When used as a power source for golf carts, utility carts, & turf utility vehicles, Graphene provides a superior alternative to other types of batteries.

- **Charges in Less Time Than Other Solutions**
- **Long Life Span – Outlives Most Vehicles**
- **Solid State Battery – No Liquid**
- **Lower Fire Risk**
- **Does Not Produce Toxic Fumes While Charging**
- **Durable Metal Case**



Contact us



+1 949 432-9091



sales@mintenergy.com



895 Dove Street Suite 300
Newport Beach, CA 92660 USA



www.mintenergy.com

8.4 GOLF CART BATTERY SPECIFICATION	UNIT	VALUE
Rack Space Units	-	3.43
Rack Space Height	inches	6
Series Capacitors	-	14
Parallel Capacitors	-	4
Battery Banks in Parallel	-	2
Rated Voltage	V	51.80
Max Surge Voltage	V	59.50
Max Continuous Voltage	V	58.80
Min Voltage	V	42.00
Nominal Current	A	80.00
Continuous Current	A	160.00
Peak Current (5 sec)	A	240.00
Maximum Charging Current	A	225.00
Full to Empty Discharge Time	Minutes	60.81
Empty to Full Charge Time	Minutes	43.24
Estimated VA Hours	VAh	8,400
Nominal Energy Rating	kVAh	8.40
Estimated Energy Storage (Watt Hours)	wh	8,400
Estimated Energy Storage (Amp Hours)	Ah	126.16
Assumed Power Factor	-	1.00
Max Inter-Cell Balance Discharge Current	mA	200
Overcharge Protection Cutoff Voltage	V	4.25
Over Discharge Protection Cutoff Voltage	V	4.187
Internal Resistance	mΩ	≤ 5.25
Leakage Current	mA/h	≤31.111
Cycle Life	-	20,000
Operating Temperature Range	°F (°C)	-4 to 140 (-20 to 60)
Storage Temperature Range	°F (°C)	-4 to 131 (-20 to 55)
Protection Class	-	IP20
Dimensions	inches	21.877 x 9.481 x 12.063

FEATURES

- Built-In Battery Management System (BMS)
- Built-in Protections
- Rapid Charge and Discharge Capabilities
- Constant Current / Constant Voltage – Similar to Lithium-Ion

Contact us

- +1 949 432-9091
- sales@mintenergy.com
- 895 Dove Street Suite 300
Newport Beach, CA 92660 USA
- www.mintenergy.com