

About Us

Mint Energy develops energy generation and energy storage solutions to meet the ever-changing needs of modern-day consumers and businesses. Mint Energy strives to provide safe, environmentally-friendly, cost-effective, and reliable solutions.

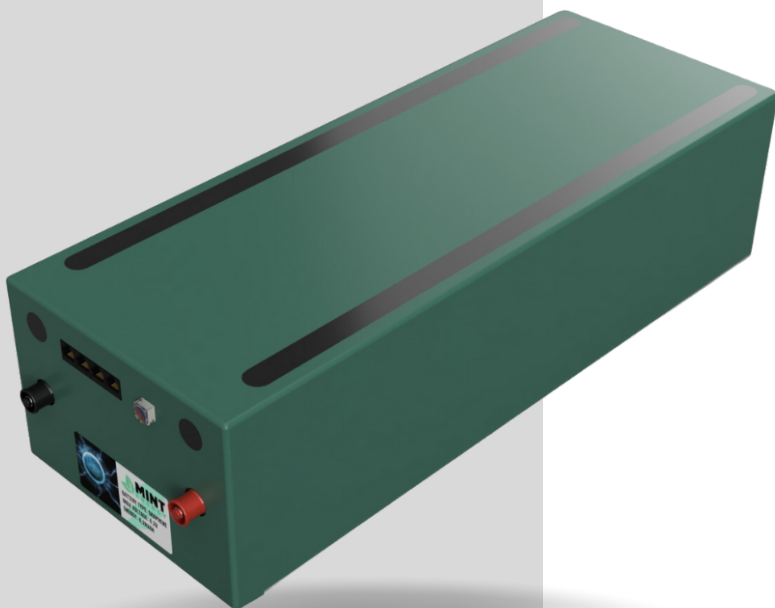


5.4 kWh Power Module

Mint Energy's Graphene Power Modules are at the forefront of energy storage technology. Leveraging graphene's high surface area allows for exceptional energy storage capacity in a compact form factor.


What sets our graphene battery modules apart is their exceptional heat dissipation capabilities. The Graphene-Based Module efficiently dissipates heat generated during charging and discharging, addressing one of the major challenges of conventional lithium-ion batteries. Our graphene batteries are safer, more efficient, and have a much longer lifespan than other types of batteries.

Unlike batteries which store energy chemically, The Mint Energy Graphene Supercapacitor stores energy electrostatically. The chemical reactions used to charge regular batteries work slowly and eventually cause the electrode materials to breakdown, our Supercapacitor is different. It can be recharged multiple times without wearing out.



- **Long lasting solution**
- **Quick charge/discharge**
- **Scalable solution - Full racks available**
- **Safer than lithium-ion**

Contact us

-  +949 432-9091
-  sales@mintenergy.com
-  895 Dove Street Suite 300
Newport Beach, CA 92660 USA
-  www.mintenergy.com

BATTERY INFORMATION

Battery Chemistry	Graphene
Rated Voltage	75.60
Max Surge Voltage	76.50
Min Voltage	54.00
Nominal Current A	80.00
Continuous Current A	160.00
Peak Current A	240.00
Nominal Energy Rating	5,400.00
Estimated Energy Storage (Wh)	5,400.00
Estimated Energy Storage (Ah)	80.00
Battery Modules	46.00
Nominal DC Input Voltage	66.60
AC Output Phase	Split/Single
AC Output Voltage (selectable)	
AC Output Frequency (selectable)	

PROTECTIONS AND SAFETY DEVICES

Short Circuit Protection	Yes
Over-charge / Over-discharge Protection	Yes
Temperature Cut-Off	Yes
Manual Lockout Switch (Removeable Key)	Yes

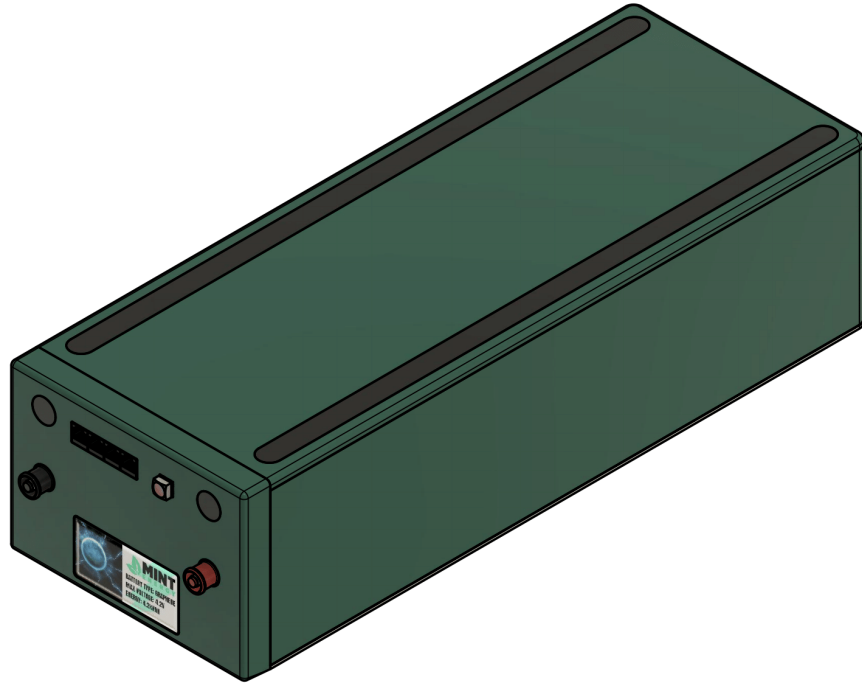
WORKING CONDITIONS

Degree of Protection	IP20
Operating Temperature Range	-4 (-20) °F (°C) - 140 (60) °F (°C)

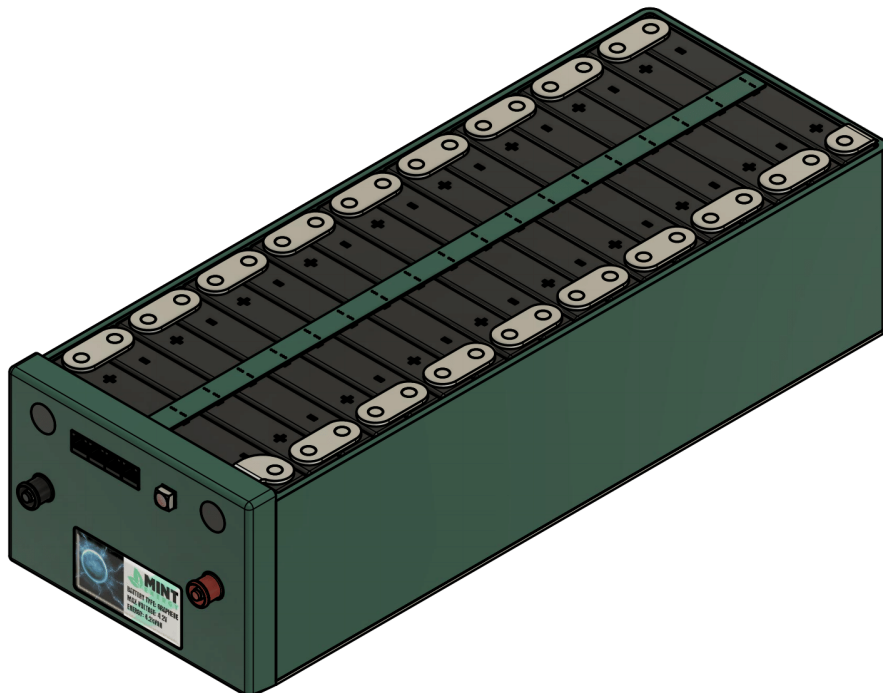
GENERAL INFORMATION

Certificate	UL 810A
Country of Manufacture	South Africa

5.4 kWh Power Module



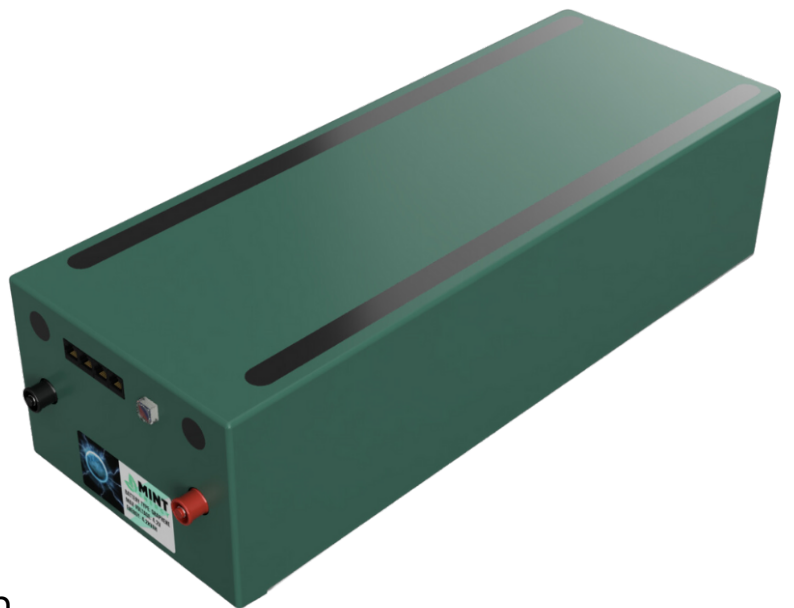
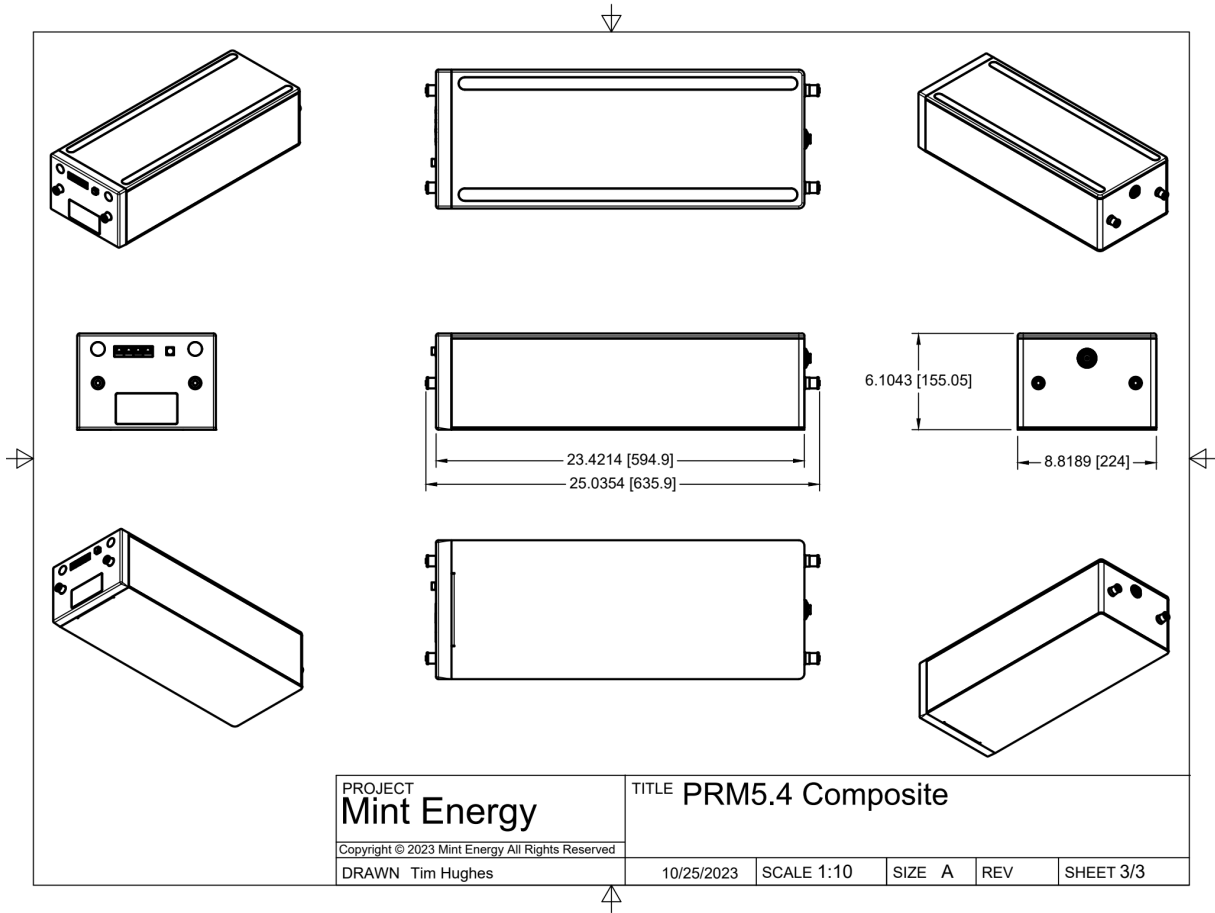
PROJECT Mint Energy	TITLE PRM5.4 Composite				
<small>Copyright © 2023 Mint Energy All Rights Reserved</small>					
DRAWN Tim Hughes	10/25/2023	SCALE 1:3	SIZE A	REV	SHEET 1/3



Notes:

1. The module is shown here with the Lid section removed. However, the Lid is a part of the sides and is not removable.
2. The Lid does have removable rubber plugs, that allow access to all of the battery terminals.

PROJECT Mint Energy	TITLE PRM5.4 Composite				
<small>Copyright © 2023 Mint Energy All Rights Reserved</small>					
DRAWN Tim Hughes	10/25/2023	SCALE 1:3	SIZE A	REV	SHEET 2/3



Contact us



+949 432-9091



sales@mintenergy.com



895 Dove Street Suite 300
Newport Beach, CA 92660 USA



www.mintenergy.com