

About Us

Mint Energy develops energy generation and energy storage solutions to meet the ever-changing needs of modern-day consumers and businesses. Mint Energy strives to provide safe, environmentally-friendly, cost-effective, and reliable solutions.

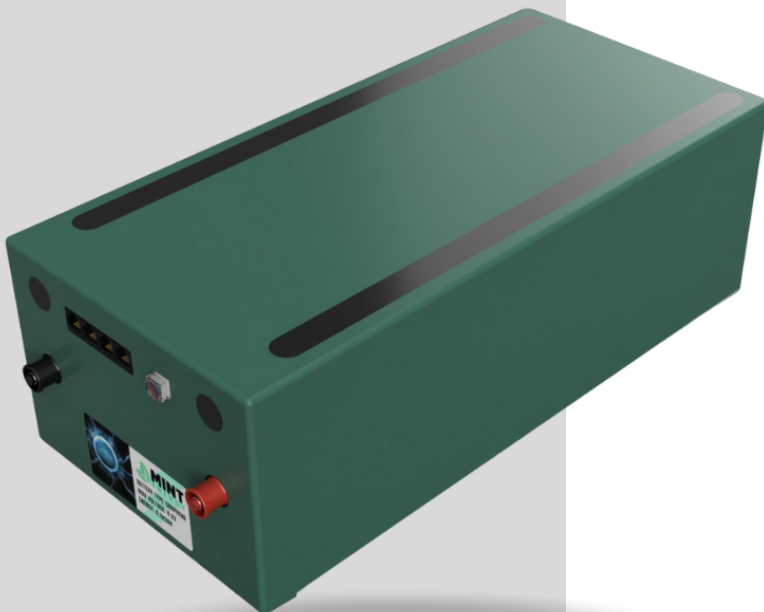


4.2 kWh Power Module

Mint Energy's Graphene Power Modules are at the forefront of energy storage technology. Leveraging graphene's high surface area allows for exceptional energy storage capacity in a compact form factor.


What sets our graphene battery modules apart is their exceptional heat dissipation capabilities. The Graphene-Based Module efficiently dissipates heat generated during charging and discharging, addressing one of the major challenges of conventional lithium-ion batteries. Our graphene batteries are safer, more efficient, and have a much longer lifespan than other types of batteries.

Unlike batteries which store energy chemically, The Mint Energy Graphene Supercapacitor stores energy electrostatically. The chemical reactions used to charge regular batteries work slowly and eventually cause the electrode materials to breakdown, our Supercapacitor is different. It can be recharged multiple times without wearing out.



- **Long lasting solution**
- **Quick charge/discharge**
- **Scalable solution - Full racks available**
- **Safer than lithium-ion**

Contact us

-  +949 432-9091
-  sales@mintenergy.com
-  895 Dove Street Suite 300
Newport Beach, CA 92660 USA
-  www.mintenergy.com



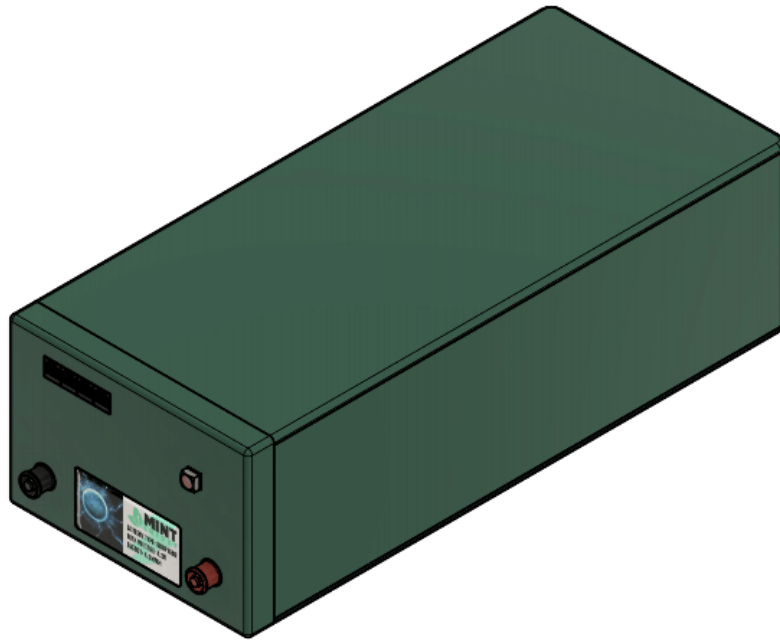
SPECIFICATION	UNIT	VALUE
Total Capacitance	f	6,000
Rack Space Units	-	4
Rack Space Height	-	7"
Series Capacitors	-	14
Parallel Capacitors	-	4
Battery Banks in Parallel	-	1
Total Capacitors	-	56
Rated Voltage	V	51.80
Max Surge Voltage	V	58.80
Max Continuous Voltage	V	59.50
Min Voltage	V	42
Nominal Current	A	80.00
Continuous Current	A	160.00
Peak Current (5 sec)	A	240
Maximum Charging Current	A	225
Total Cells Capacitance	f	1,176,000
Estimated VA Hours	VAh	4,200
Nominal Energy Rating	kVAh	4.2
Estimated Energy Storage (Watt Hours)	wh	4,200
Estimated Energy Storage (Amp Hours)	Ah	81.08
Internal Resistance	mΩ	5.25
Leakage Current	mA/h	15.556
Cycle Life	-	20,000
Operating Temperature Range	°F (°C)	-4 to 140 (-20 to 60)
Storage Temperature Range	°F (°C)	-4 to 131 (-20 to 55)
Protection Class	-	IP20
Product Weight	Lbs. (kg)	33.2 (15.1)
Dimensions	mm	513.4 x 227 x 154

FEATURES

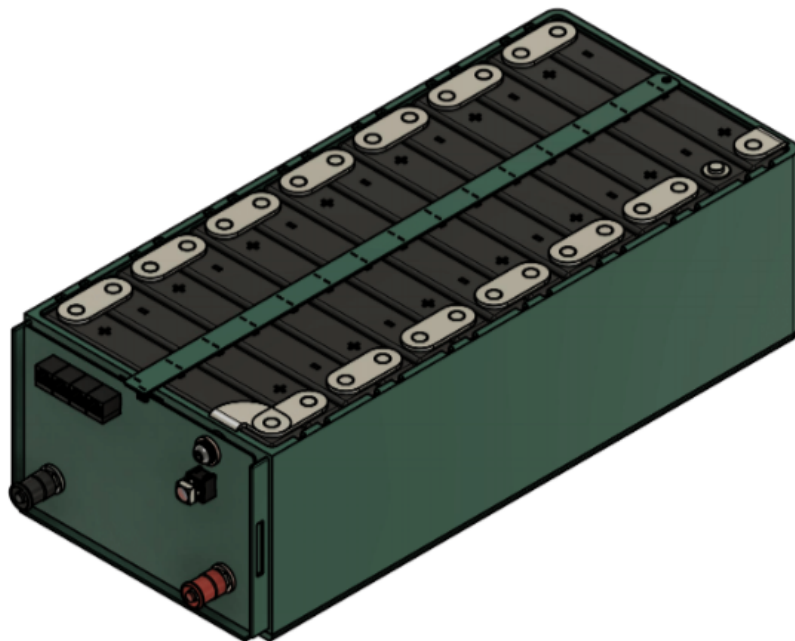
- Built-In Battery Management System (BMS)
- Built-in Protections
- Rapid Charge and Discharge Capabilities
- Constant Current/Constant Voltage Charging Pattern Similar to Lithium-Ion
- Multiple Battery Banks Can Be Used in Parallel to Increase Run-Time



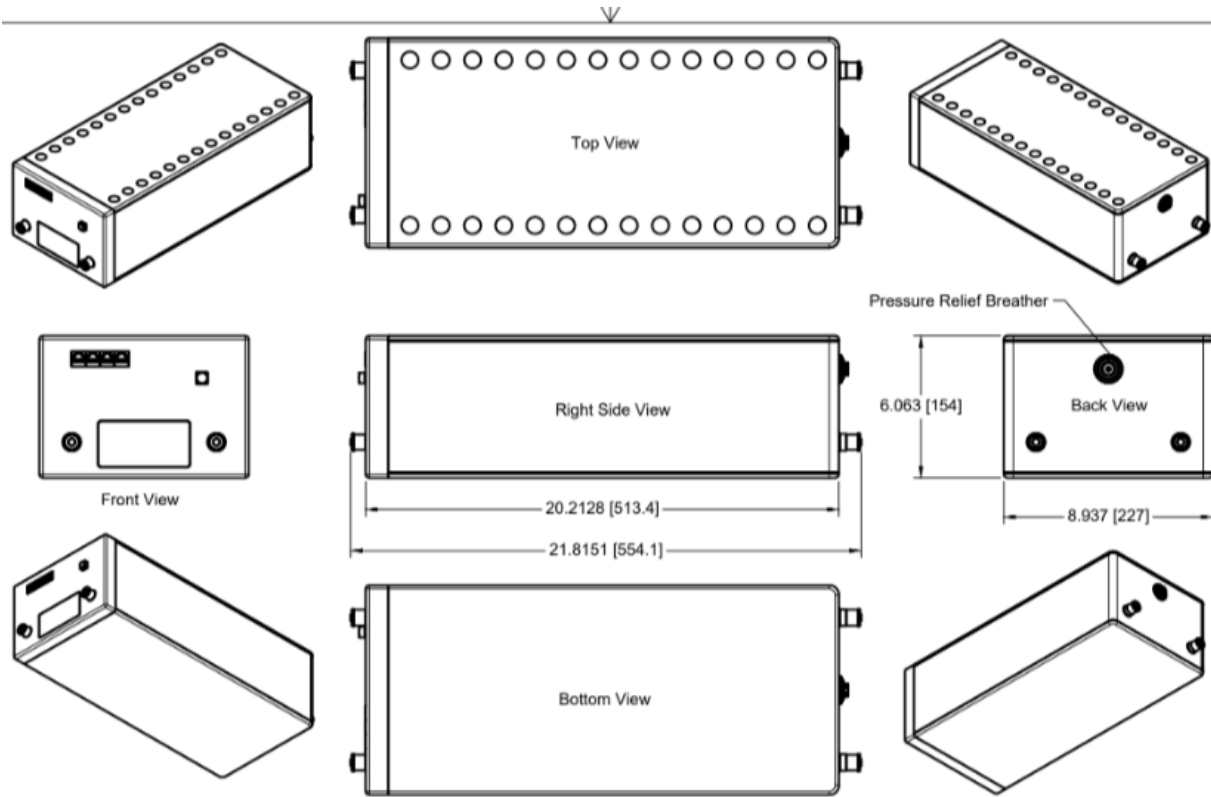
4.2 kWh Power Module



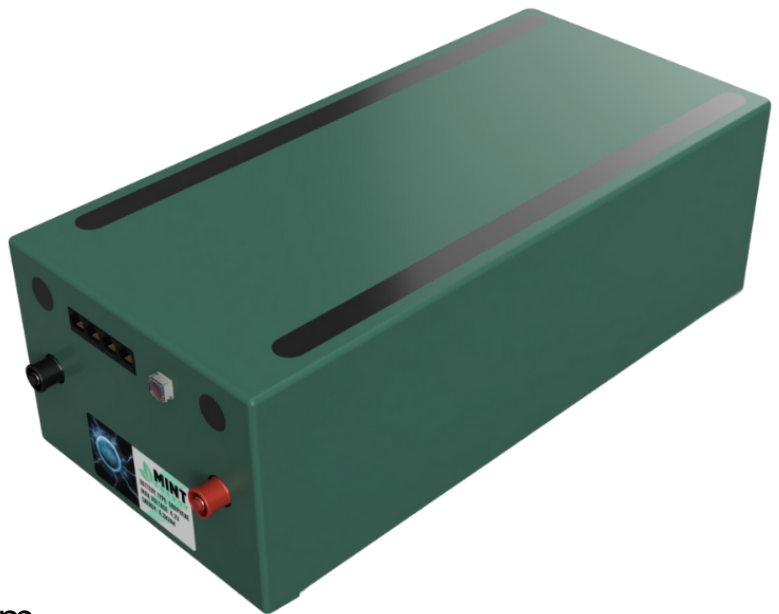
PROJECT Mint Energy	TITLE PRM4.2 Composite				
Copyright © 2023 Mint Energy All Rights Reserved					
DRAWN Tim Hughes	7/26/2023	SCALE 1:3	SIZE A	REV	SHEET 1/2



PROJECT Mint Energy	TITLE PRM4.2 Composite				
Copyright © 2023 Mint Energy All Rights Reserved	Internal View				
DRAWN Tim Hughes	7/26/2023	SCALE 1:3	SIZE A	REV	SHEET 2/2



PROJECT Mint Energy	TITLE PRM4.2 Composite				
<small>Copyright © 2023 Mint Energy All Rights Reserved</small>					
DRAWN Tim Hughes	7/26/2023	SCALE 1:5	SIZE A	REV	SHEET 3/5



Contact us

-  +949 432-9091
-  sales@mintenergy.com
-  895 Dove Street Suite 300
Newport Beach, CA 92660 USA
-  www.mintenergy.com