

About Us

Mint Energy develops energy generation and energy storage solutions to meet the ever-changing needs of modern-day consumers and businesses. Mint Energy strives to provide safe, environmentally-friendly, cost-effective, and reliable solutions.



281 KWh Rack Using 5.4KWh Modules

Graphene-based battery systems represent a groundbreaking frontier in energy storage technology. Graphene, a single layer of carbon atoms arranged in a hexagonal lattice, boasts a unique set of properties that make it a game-changer in the battery industry. Graphene's remarkable electrical conductivity and thermal efficiency enable these systems to deliver exceptional performance. These batteries have the potential to store and discharge energy at unprecedented rates, addressing the demand for quick-charging solutions in our increasingly digital world.

One of the most compelling aspects of graphene-based battery systems is their enhanced durability and safety. Graphene's exceptional heat dissipation properties make these batteries less prone to overheating and thermal runaway, which are common issues in traditional lithium-ion batteries. This not only ensures a longer lifespan for the batteries but also significantly reduces safety risks.

- **Includes (13) 5.4 Quad Rack Modules**
- **Plug and Play Design**
- **Long lasting solution**
- **Quick charge/discharge**
- **Scalable solution**
- **Safer than lithium-ion**



Contact us



+1 949 432-9091



sales@mintenergy.com



895 Dove Street Suite 300
Newport Beach, CA 92660 USA



www.mintenergy.com

SYSTEM INFORMATION

Max Power | 280.8 kwh

BATTERY INFORMATION

Battery Chemistry	Graphene
Rated Voltage	75.60
Max Surge Voltage	76.50
Min Voltage	54.00
Nominal Current A	80.00
Continuous Current A	160.00
Peak Current A	240.00
Nominal Energy Rating	5,400.00
Estimated Energy Storage (Wh)	5,400.00
Estimated Energy Storage (Ah)	80.00
Battery Modules	52.00
Nominal DC Input Voltage	66.60
AC Output Phase	Split/Single
AC Output Voltage (selectable)	
AC Output Frequency (selectable)	

PROTECTIONS AND SAFETY DEVICES

Short Circuit Protection	Yes
Over-charge / Over-discharge Protection	Yes
Temperature Cut-Off	Yes
Manual Lockout Switch (Remove)	Yes

WORKING CONDITIONS





Degree of Protection	IP20
Operating Temperature Range	-4 (-20) °F (°C) - 140 (60) °F (°C)

GENERAL INFORMATION

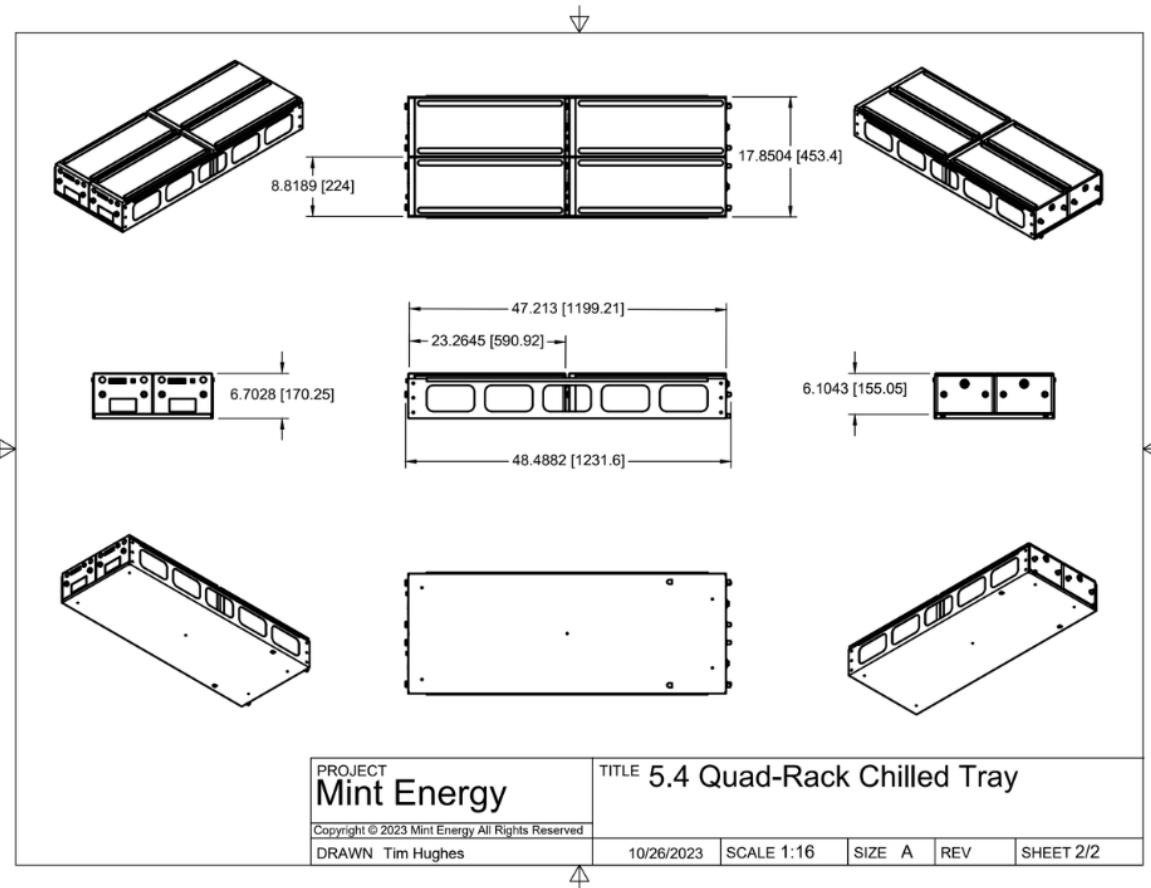
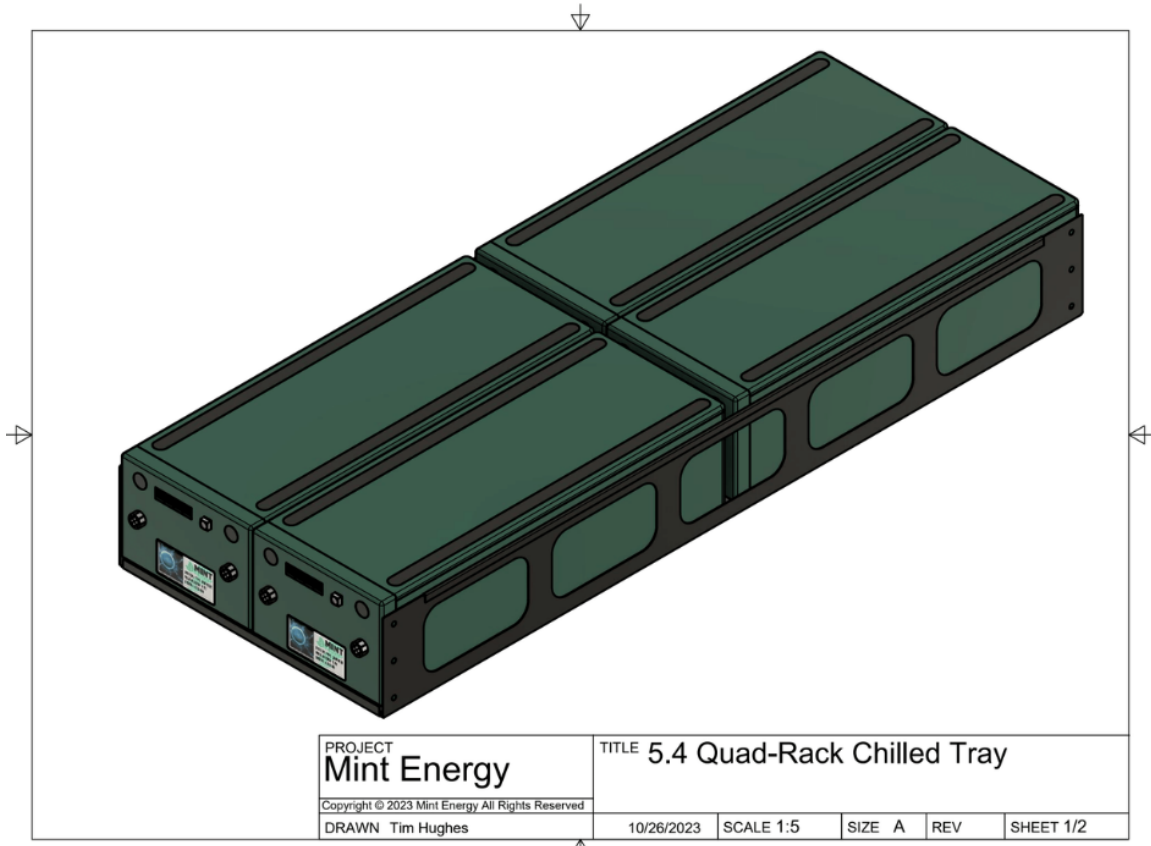
Certificate	UL 810A
Country of Manufacture	South Africa

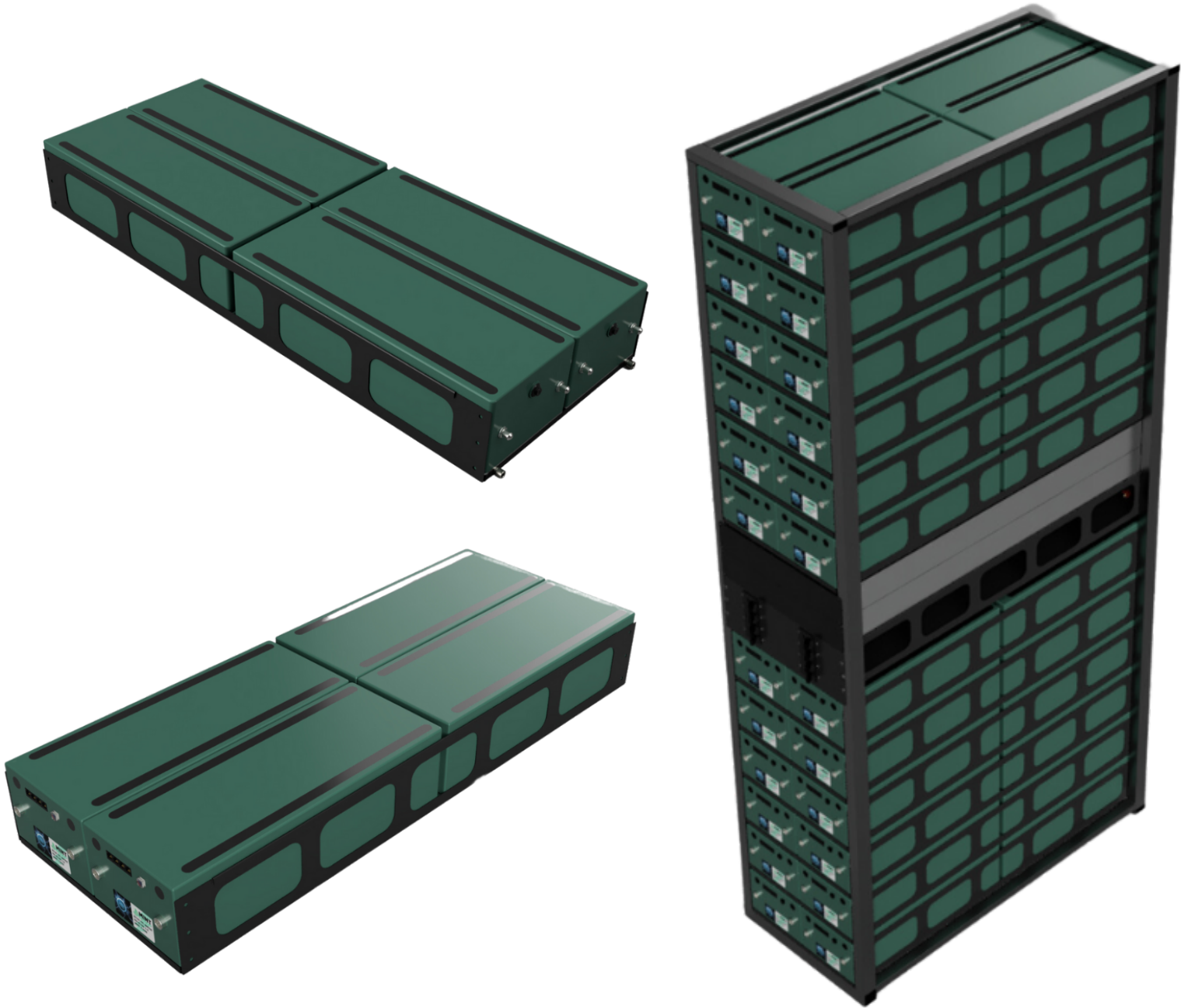


Contact us

-  +1 949 432-9091
-  sales@mintenergy.com
-  895 Dove Street Suite 300
Newport Beach, CA 92660 USA
-  www.mintenergy.com

281 KWh Rack Modules





Contact us



+1 949 432-9091



sales@mintenergy.com



895 Dove Street Suite 300
Newport Beach, CA 92660 USA



www.mintenergy.com