

About Us

Mint Energy develops energy generation and energy storage solutions to meet the ever-changing needs of modern-day consumers and businesses. Mint Energy strives to provide safe, environmentally-friendly, cost-effective, and reliable solutions.



4.704 MWh Container

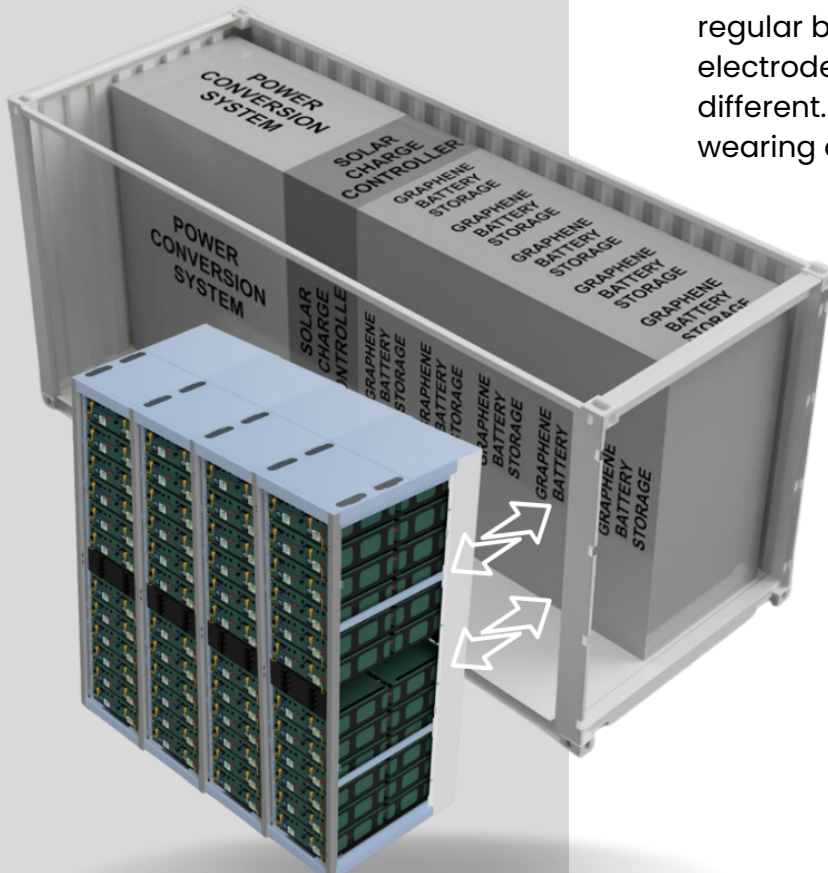
Efficient Power Solution

The 20-ft Container represents a formidable energy storage solution, boasting an impressive capacity of 4.704 megawatt-hours (MWh). Its unique design enables the storage of substantial energy reserves, ensuring uninterrupted access to power day and night, regardless of weather conditions. The advanced Graphene Modules exhibit rapid charging capabilities, surpassing the efficiency of other conventional types of batteries. The plug-and-play design allows for versatility in deployment. The extended life span positions the Container as a durable and reliable investment.

Why Graphene?

Unlike batteries which store energy chemically, The Mint Energy Graphene Supercapacitor stores energy electrostatically. The chemical reactions used to charge regular batteries work slowly and eventually cause the electrode materials to breakdown, our Supercapacitor is different. It can be recharged multiple times without wearing out.

- Long lasting solution
- Integrates with any source of power
- Quick charge/discharge
- 100% capacity possible
- Massive energy capacity
- Scalable solution





Contact us

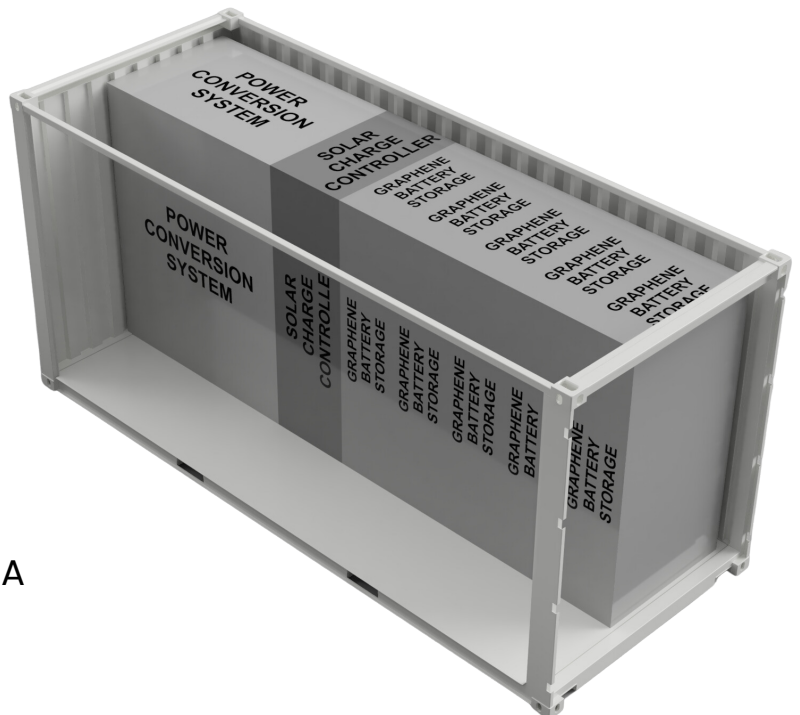
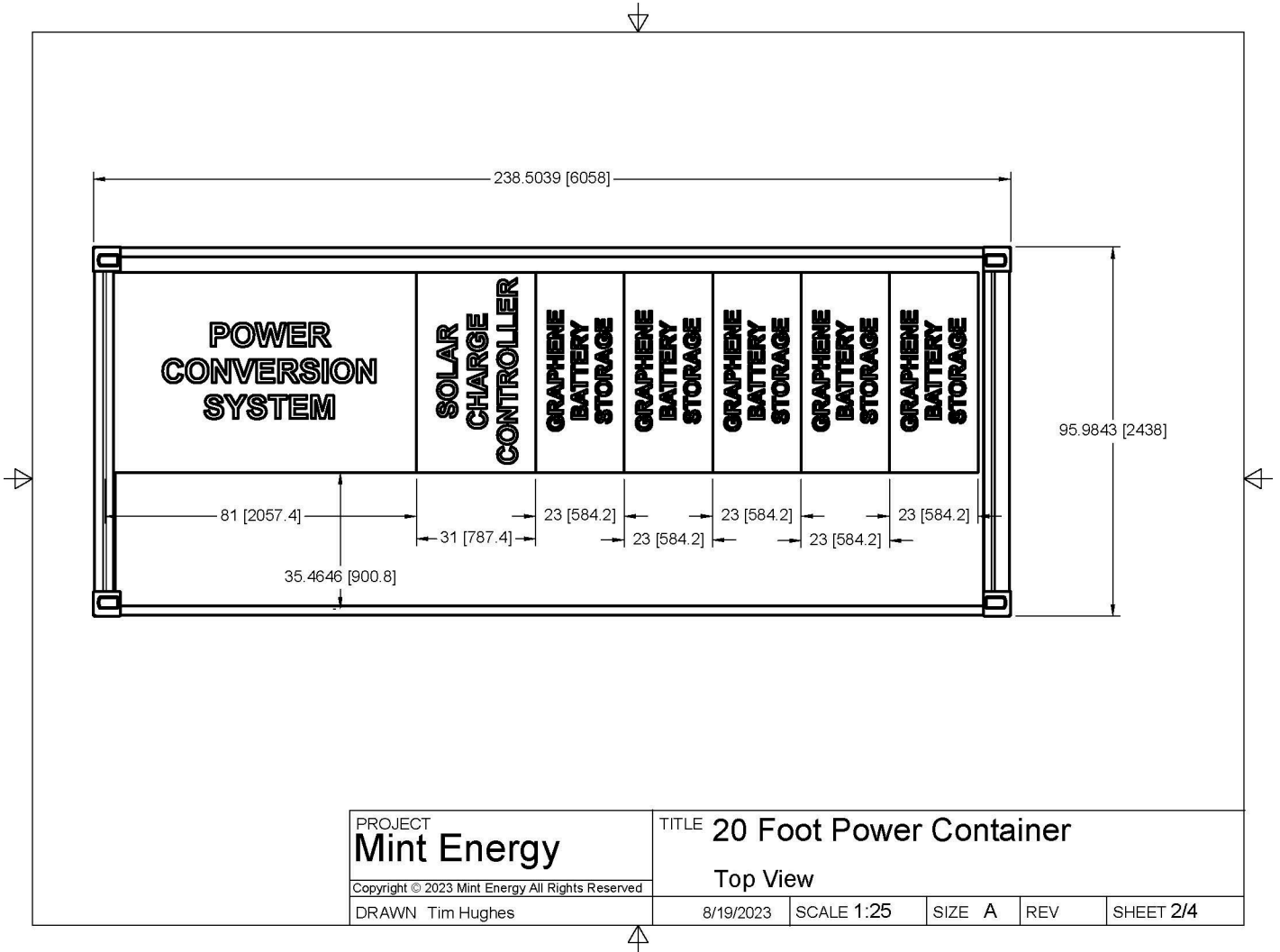
-  +949 432-9091
-  sales@mintenergy.com
-  895 Dove Street Suite 300
Newport Beach, CA 92660 USA
-  www.mintenergy.com



SPECIFICATION	UNIT	VALUE
Battery Banks in Series	-	1
Battery Banks in Parallel	-	24
Total Battery Bank Racks	-	24
Total Extra Strings	-	4
Total Rack Slots	-	288
Total Rack Slots Within Strings	-	280
Total Rack Slots Unused	-	8
Total Battery Bank Strings	-	28
Total Battery Bank Modules	-	1,120
Total Capacitors	-	62,720
Rated Voltage	V	518.00
Max Continuous Voltage	V	588.00
Max Surge Voltage	V	595.00
Min Voltage	V	420.00
Nominal Current	A	8,960.00
Continuous Current	A	17,920.00
Peak Current (5 sec)	A	26,880.00
Maximum Charging Current	A	25,200.00
Total Cells Capacitance	f	1,317,120,000
Total Capacitance	f	6,000,000
Estimated VA Hours	VAh	4,704,000.00
Estimated VA Hours	kVAh	4,704.00
Estimated VA Hours	MVAh	4.70
Estimated Energy Storage (Watt Hours)	wh	4,704,000.00
Estimated Energy Storage (Kilowatt Hours)	kWh	4,704.00
Estimated Energy Storage (Megawatt Hours)	MWh	4.70
Estimated Energy Storage (Amp Hours)	Ah	9,081.08
Cycle Life	-	20,000
Operating Temperature Range	°F (°C)	-4 to 140 (-20 to 60)
Storage Temperature Range	°F (°C)	-4 to 131 (-20 to 55)
Protection Class	-	IP20

Contact us

-  +949 432-9091
-  sales@mintenergy.com
-  895 Dove Street Suite 300
Newport Beach, CA 92660 USA
-  www.mintenergy.com



Contact us



+949 432-9091



sales@mintenergy.com



895 Dove Street Suite 300
Newport Beach, CA 92660 USA



www.mintenergy.com